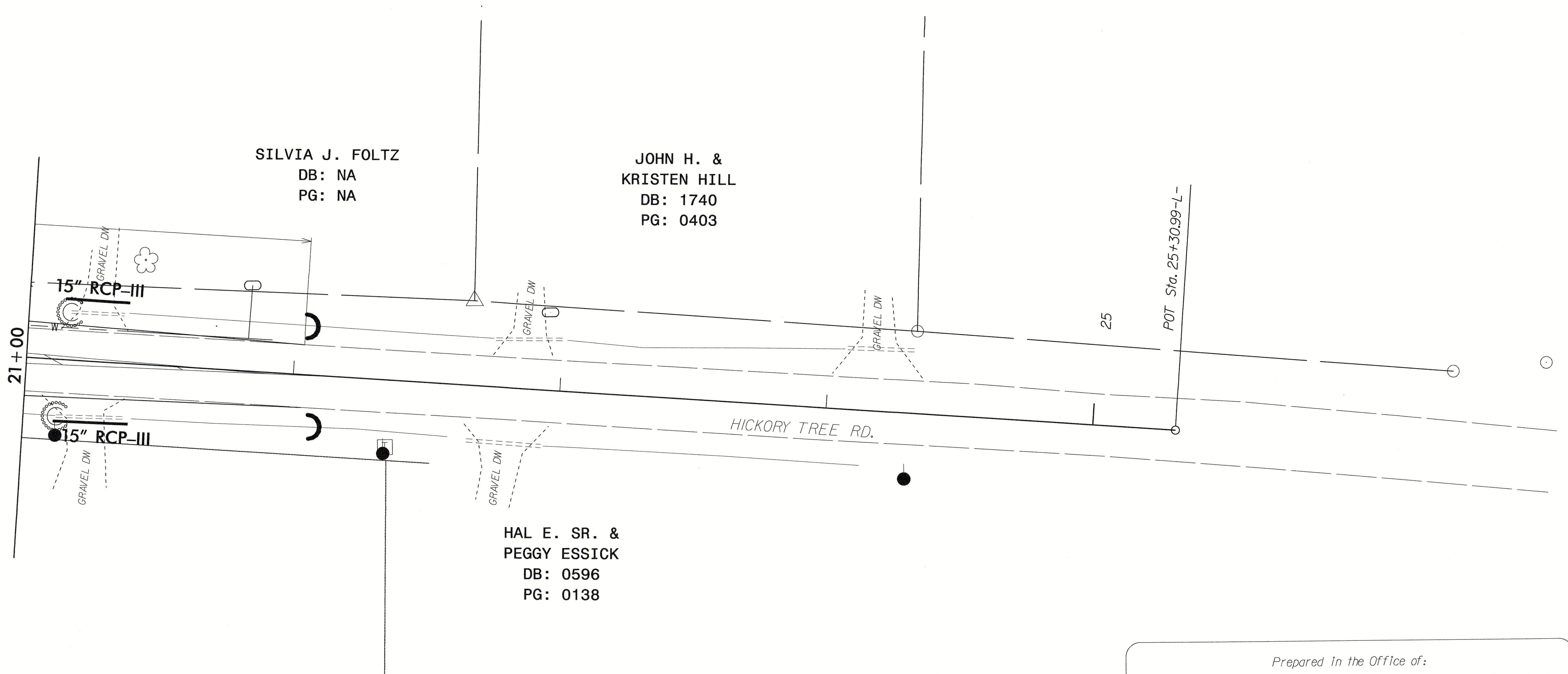


PROJECT REFERENCE NO. HICKORYTREE RD	SHEET NO. 10
EC SHEET NO. 3 OF 3	
DISTRICT ENGINEER NORTH CAROLINA PROFESSIONAL SEAL 19659 8/4/2015 WRIGHT R. ARCHER	HYDRAULICS ENGINEER

# EROSION CONTROL PLAN



SILVIA J. FOLTZ  
DB: NA  
PG: NA

JOHN H. &  
KRISTEN HILL  
DB: 1740  
PG: 0403

HAL E. SR. &  
PEGGY ESSICK  
DB: 0596  
PG: 0138

HICKORY TREE RD.

15" RCP-III

15" RCP-III

21+00

25

POT Sta. 25+30.99-L

GRAVEL DW

GRAVEL DW

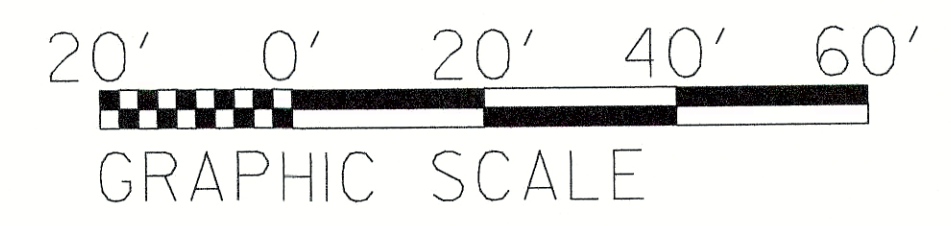
GRAVEL DW

GRAVEL DW

GRAVEL DW

REVISIONS

04-AUG-2015 08:24  
 N:\Head28341\PROJECTS\HICKORY TREE RD @ MENDENHALL\RODGINS\HICKORYTREE\_PSH3.dgn  
 8/17/99



Prepared in the Office of:  
**DEPARTMENT OF TRANSPORTATION**  
375 SILAS CREEK PKWY, WINSTON SALEM, NC 27127

2006 STANDARD SPECIFICATIONS

<b>DATE</b>	<b>REVISIONS</b>	<b>APP. BY DIST. ENG.</b>	<b>DATE</b>
11/18/14	DRAINAGE & ROW		
		<b>APP. BY DIV. TRAFFIC ENG.</b>	<b>DATE</b>
		11/18/14	NTSII
		<b>REVISED</b>	<b>CHECKED BY</b>
		4/23/12	GWG
		<b>DATE DRAWN</b>	<b>DRAWN BY</b>

**SCALE 1" = 20'**

<b>PROJECT NAME</b>	HICKORY TREE @ MENDENHALL
<b>W.O. NUMBER</b>	NA
<b>SR # /ROAD NAME</b>	SR 1508 HICKORY TREE ROAD
<b>COUNTY</b>	DAVIDSON